




LAMMAN

CURAÇÃO



At Home Curaçao Realtors

Caracasbaaiweg 202

Willemstad, Curaçao

Phone / WhatsApp: +5999 788 4663

sales@athomecuracao.com

<https://athomecuracao.com>

Living on the Water's Edge

Nestled in the Kabacuchi Hills in the prestigious area of Jan Thiel, **LAMAN** rises from the water's edge and extends the towering scenic landscape towards the sky. The vision for this quaint beach neighborhood is a design-led, quiet luxury boutique resort residential development where the ocean takes a central and vital role and is the inspiration for the name and concept of **LAMAN** – the native name for the sea.

Following current trends of modernism and minimalism, a team of highly talented and creative minds, consisting of Architects, Interior Designers, and Landscape Architects came together to create a trendy & and high-design residential and vacation development with stylish architecture, grounds, facilities, amenities, and a stunning collection of luxury residences. No stone was left unturned when designing each of the facility areas especially the luxurious residence concepts, which take full advantage of the exceptional oceanfront location and the scenic sloping hills.





Coastal living on a new level

At **LAMAN** you'll find a well-balanced mix of spacious residences with exquisite design and countless luxury furnishings, finishes, and amenities. Flawless space planning and sound attention to detail & and design make each of the uniquely designed residence concepts a true and comfortable refuge for our residents and guests.

LAMAN will boast thirty-eight (38) luxurious oceanfront condominiums, six (6) first of their kind Overwater Bungalows, and twenty (20) luxury hill-side villas with spectacular panoramic views of Kabacuchi & Caracas Bays and the famed Spanish Waters.

With only sixty-four units, residents and guests can expect spacious, airy, and luxurious accommodations and social areas, top amenities and facilities, and more importantly, the highest levels of service, exclusivity, intimacy, and privacy. That is our commitment to our residents and guests.



*A dramatic setting
An exceptional location*

Jan Thiel

Set on the southeastern coast of Curaçao, Jan Thiel is an upscale, and vibrant coastal village known for its beautiful beaches, lively nightlife, and variety of charming restaurants and shops. Jan Thiel is a popular destination for both locals and tourists alike.



SEE ON GOOGLE →



Why Curaçao?

A jewel in the Caribbean, Curaçao emerges as a unique haven recognized for its vibrant beaches, architecture, and cultural heritage. Curaçao's UNESCO World Heritage status stands as a testament to its historical and architectural significance.

Yet Curaçao's charm goes beyond its natural and cultural artistry, beckoning a favorable investment climate: tax advantages include a potential 0% income tax rate and a 0% tax on capital gains, a visa-free stay of up to 90 days or 180 days for Dutch passport-holders, a strong and stable economy fortified by the steadfast political environment and characterized by growing tourism demand and resilient weather with its location outside the hurricane belt.

*An island to discover
A place to be you*

This new island destination where nature and the ocean are its closest neighbors, is a rare place where you can truly slow down, recharge and reconnect.

With a cooling ocean breeze and uninterrupted bay views, this extraordinary destination invites you to escape to your own private sanctuary, discover ocean adventure and immerse in the unique beauty of the island you call home.





Inspired by an Ocean lifestyle

An expansive playground awaits those with an adventurous spirit, a deep passion for the ocean, and especially those who embrace a care-free 'salt-life'.

Find your getaway island home in one of three unique subsections, where architecture and stylish Island design blend seamlessly with the oceanscapes and rugged yet lush surroundings.

*Three distinct residences
One perfect home*



KIWA

Luxury Sky Condos

Immerse yourself in exquisite elegance, stunning ocean views, and a barefoot lifestyle. Experience ultimate waterfront living with modern amenities and a private balcony overlooking the Caracas Baai and Spanish waters. Indulge in luxury and tranquility in this exclusive tropical retreat. The stylish KIWA Apartments are at the heart of the resort, near all the amenities.

**38 residences | 2 bedrooms | Furnished |
102 to 110 sqm | 1097.91 to 1184.03 sqft
| Inquire for price**

At Home Curaçao Realtors
Phone / WhatsApp: +5999 788 4663
sales@athomecuracao.com
<https://athomecuracao.com>



KIWA
Luxury Sky Condos

38 residences



KIWA OCEAN-FRONT FACADE



KIWA MAIN ACCESS



KIWA FACADE



KIWA MAIN LIVING & BALCONY



KIWA LIVING ROOM



GROUND FLOOR



1ST FLOOR



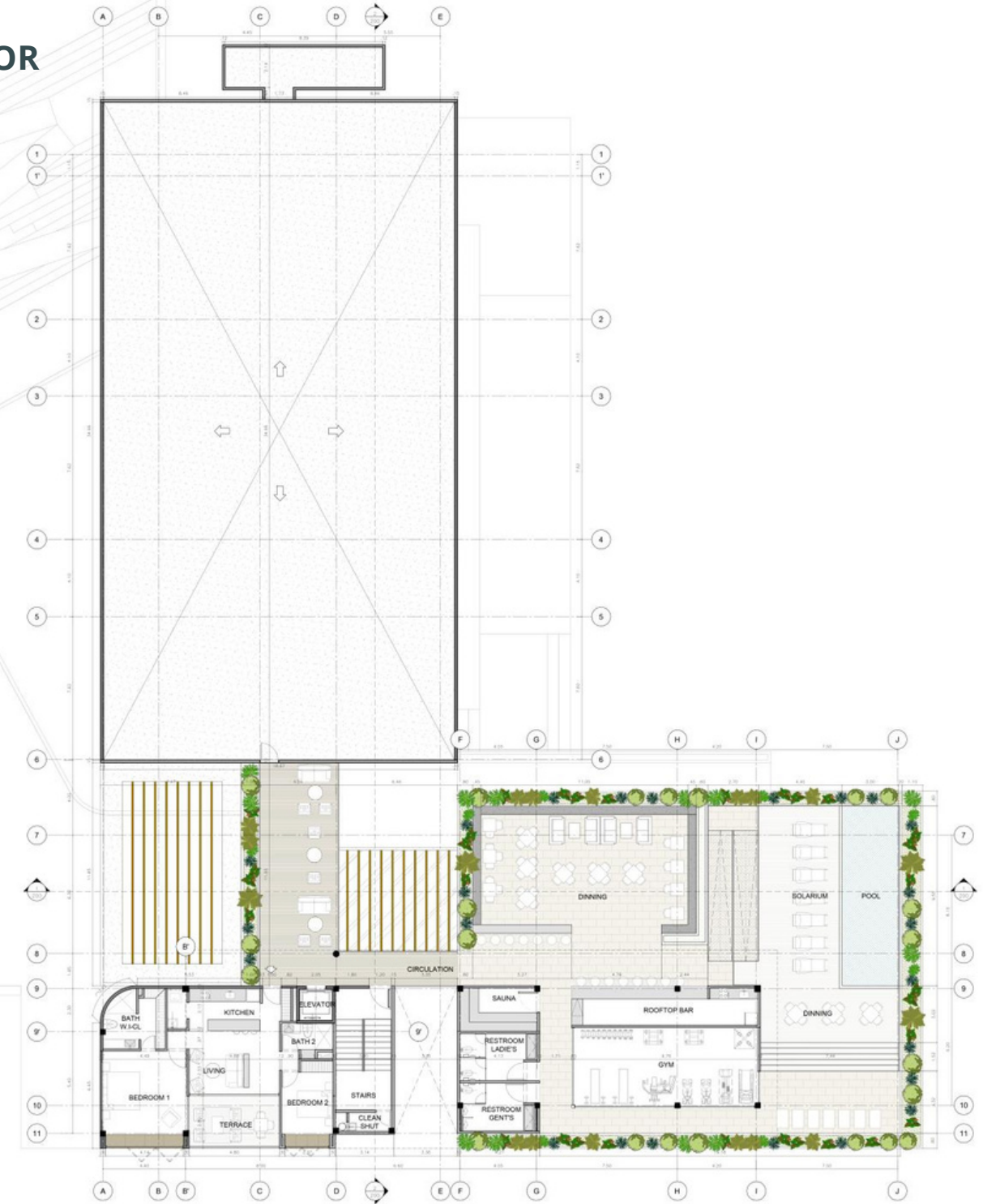
2ND FLOOR



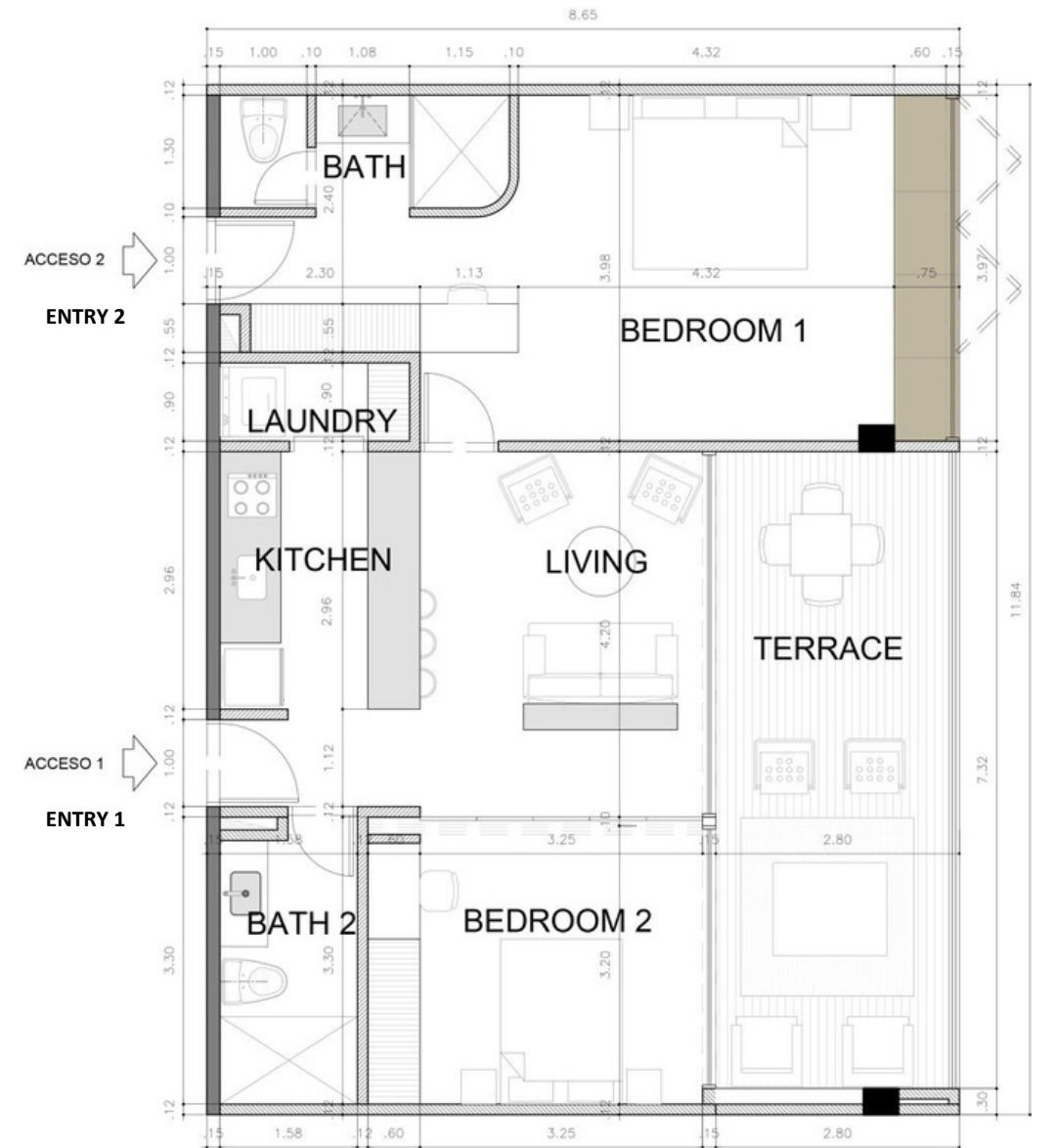
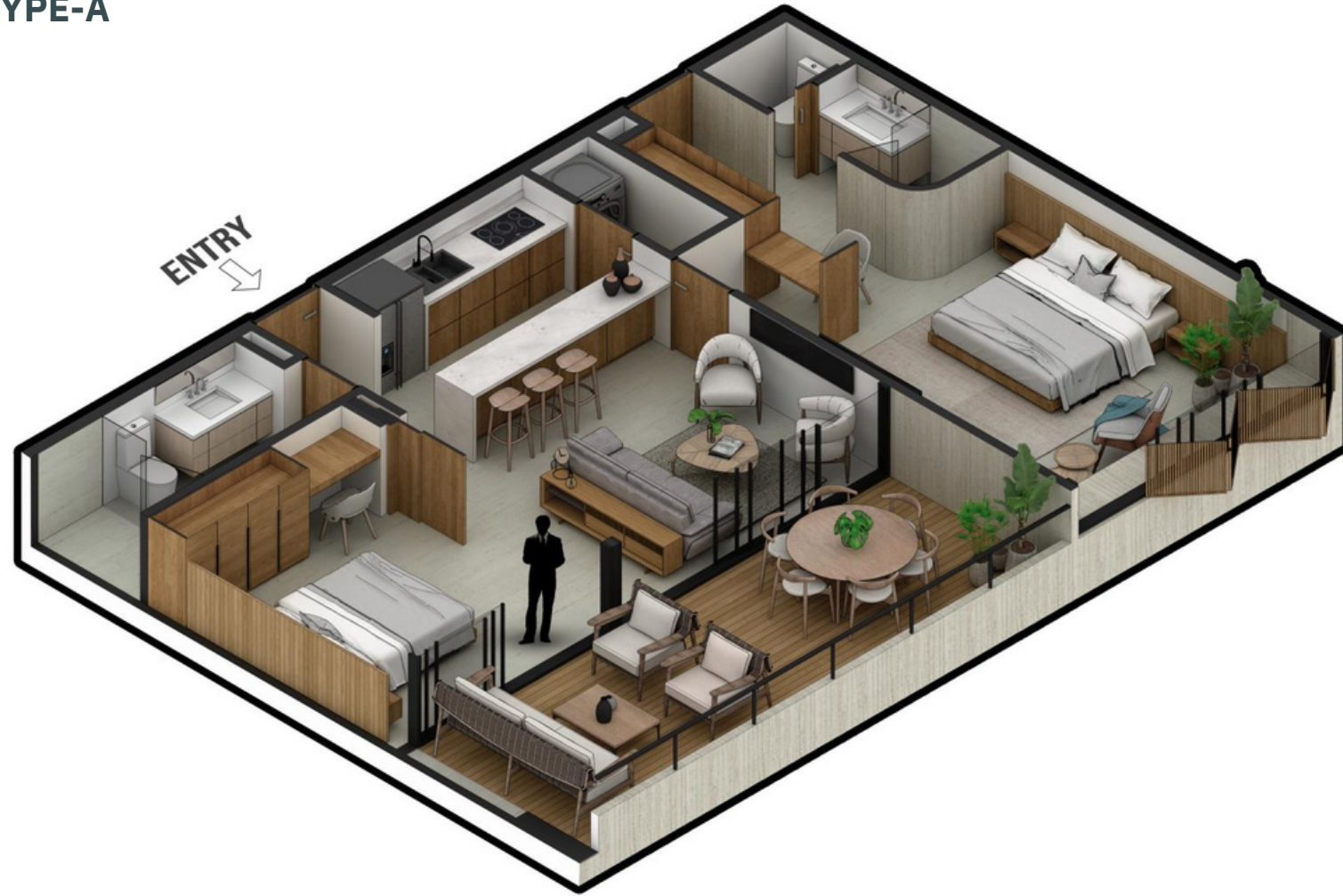
3RD FLOOR



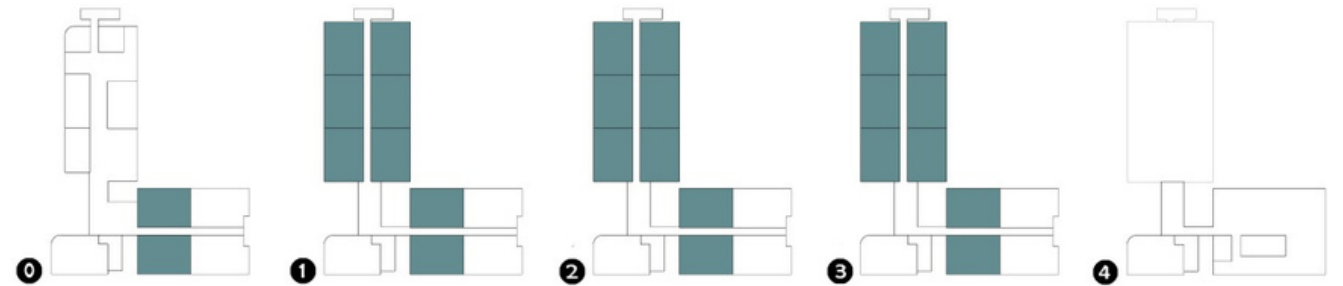
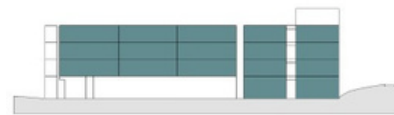
4TH FLOOR



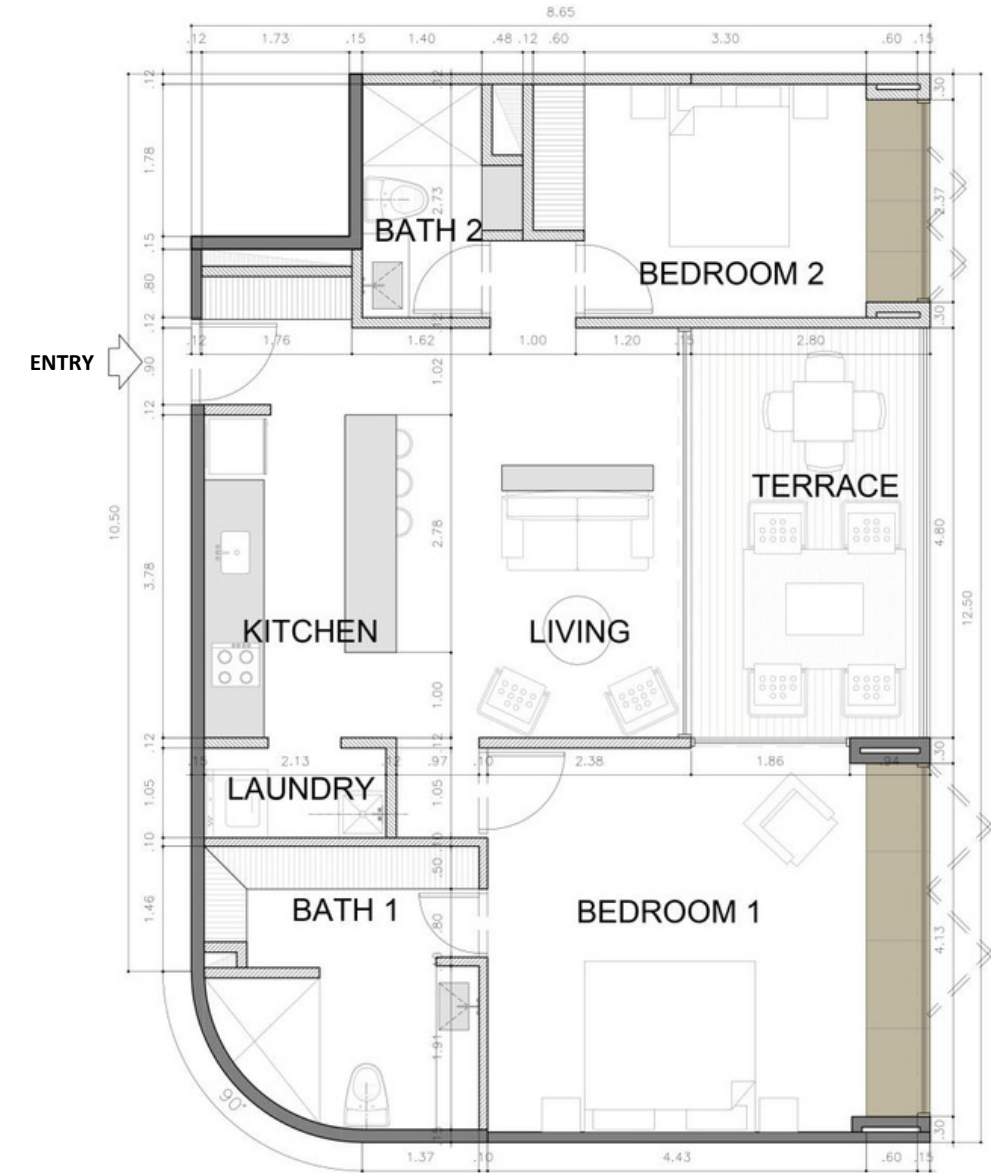
APARTMENT TYPE-A



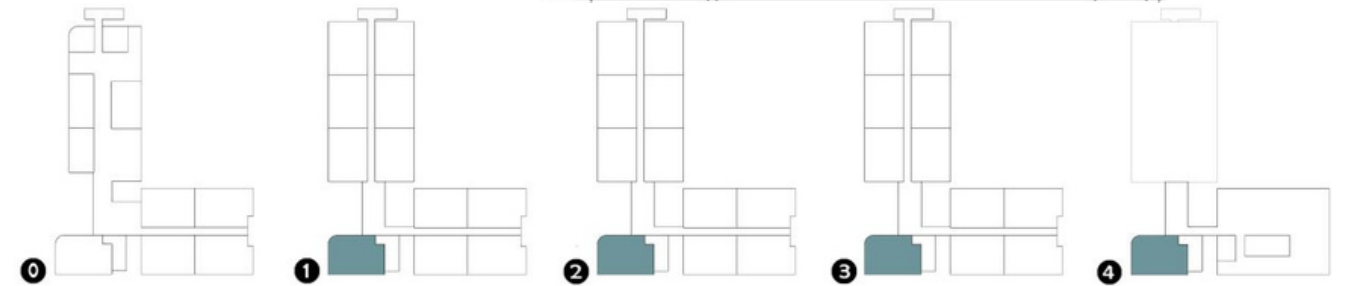
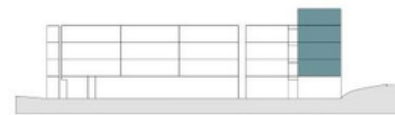
SPACE	AREA (SqM)	AREA (SqFt)
Hall	5.78	62.21
Living	10.81	116.35
Kitchen - Laundry	10.34	111.29
Terrace	21.9	235.72
Master Bedroom - Bath 1	32.8	353.05
Bedroom 2 - Bath 2	19.7	212.04
BUILT AREA	101.33	1090.70



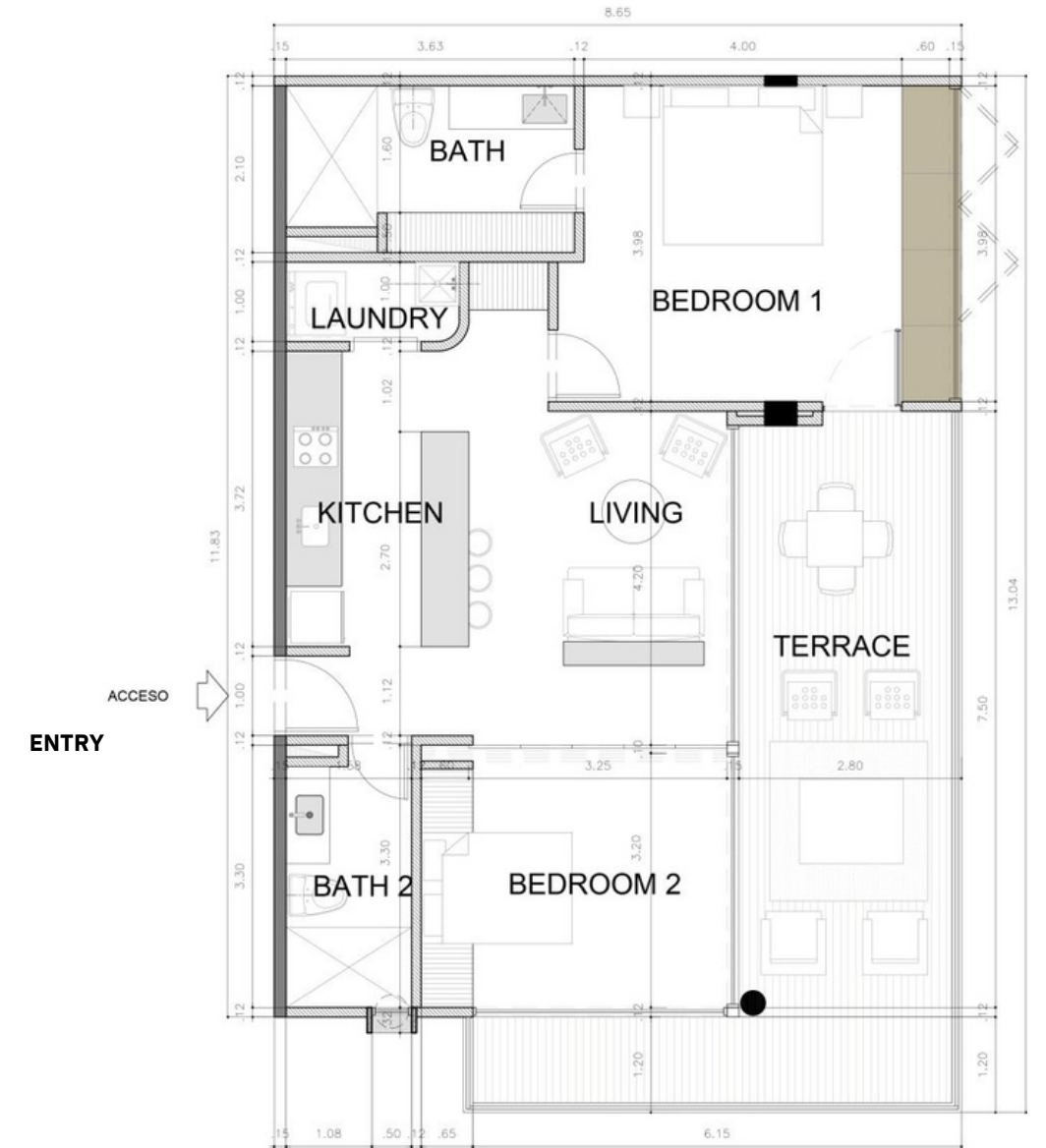
APARTMENT TYPE-B



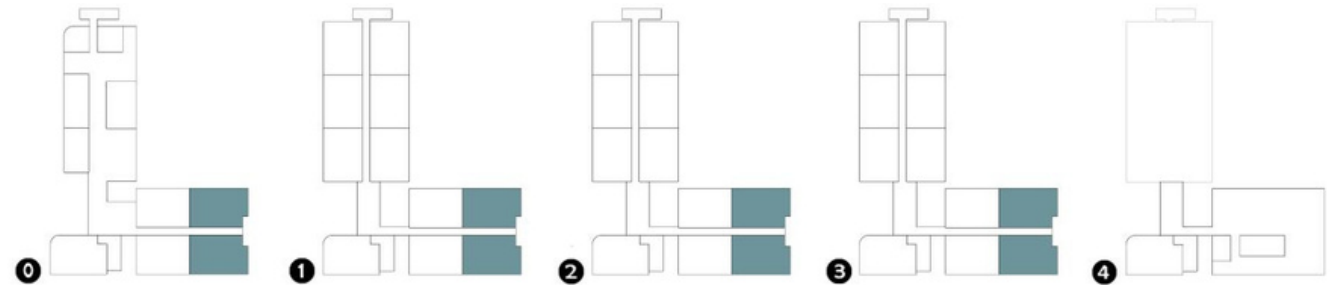
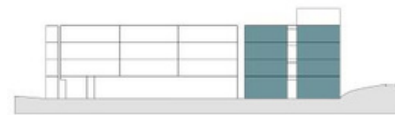
SPACE	AREA (SqM)	AREA (SqFt)
Hall - Closet	9.08	97.73
Living	13.15	141.54
Kitchen - Laundry	12.16	130.88
Terrace	13.79	148.43
Master Bedroom - Bath 1	36.16	389.22
Bedroom 2 - Bath 2	18.84	202.79
BUILT AREA	103.18	1110.62



APARTMENT TYPE-C



SPACE	AREA (SqM)	AREA (SqFt)
Hall	7.65	82.34
Living	10.63	114.42
Kitchen - Laundry	12.14	130.67
Terrace	29.44	316.88
Master Bedroom - Bath 1	29.47	317.21
Bedroom 2 - Bath 2	20.05	215.81
BUILT AREA	109.38	1177.35



STREA *Hill Villas*

Taking full advantage of their vantage point location on the hill, these residences offer breathtaking panoramic views and a serene escape from the ordinary. Immerse yourself in the perfect harmony of modern design, opulent finishes, and spacious interiors. Each house is meticulously crafted to provide the utmost comfort and sophistication, ensuring an elevated living experience. With a seamless blend of indoor and outdoor living spaces, you can relish the refreshing sea breeze while enjoying the tranquility of your private terrace or infinity pool.

**20 residences | 3 bedrooms | Furnished |
487 sqm | 5243.96 sqft | Inquire for price**



**STREA
HILL VILLAS**

20 Residences



STREA MAIN ACCESS



STREA BALCONY



STREA MAIN LIVING



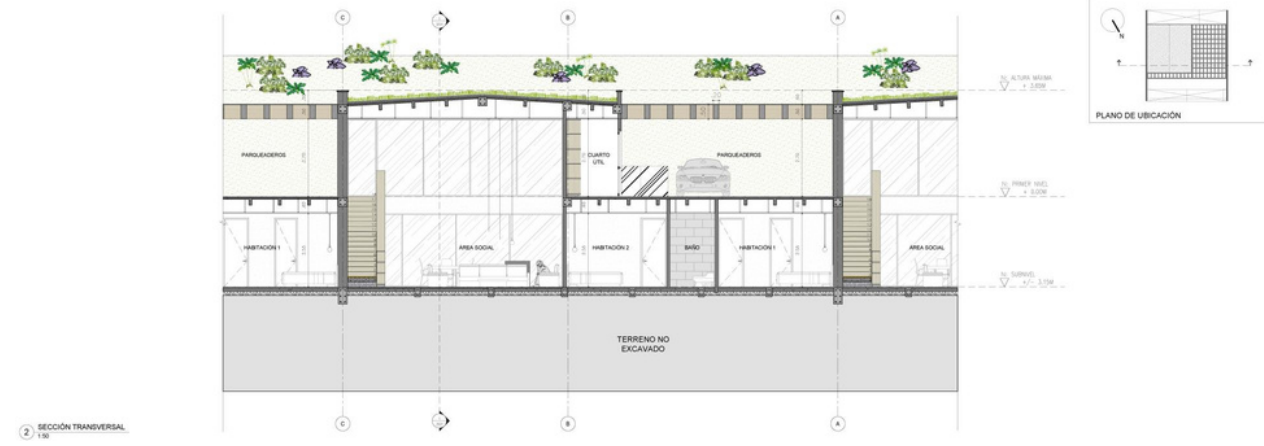
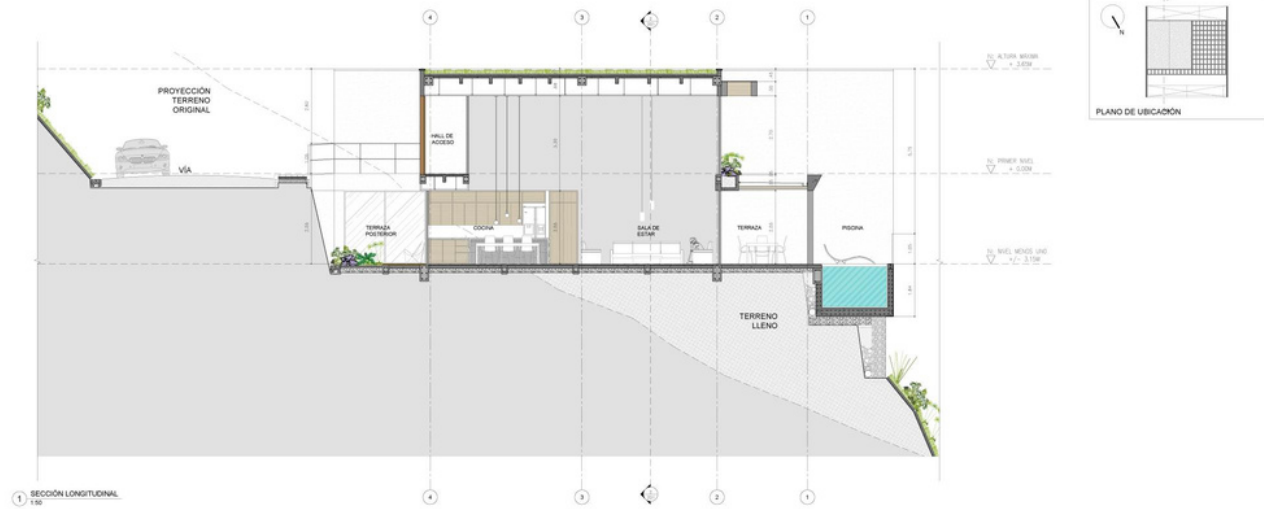
STREA DECK/TERRACE



STREA MASTER BEDROOM



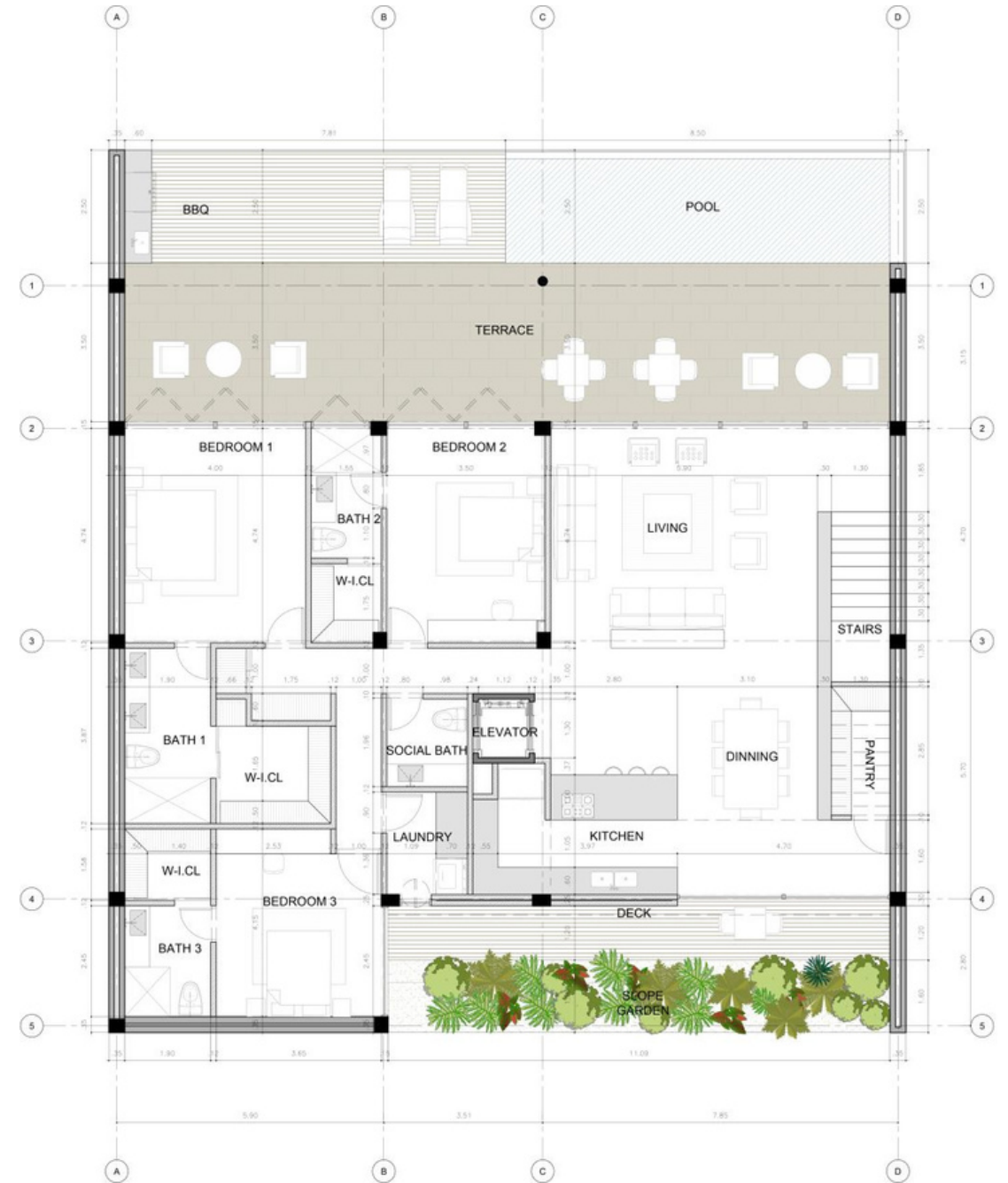
ELEVATIONS



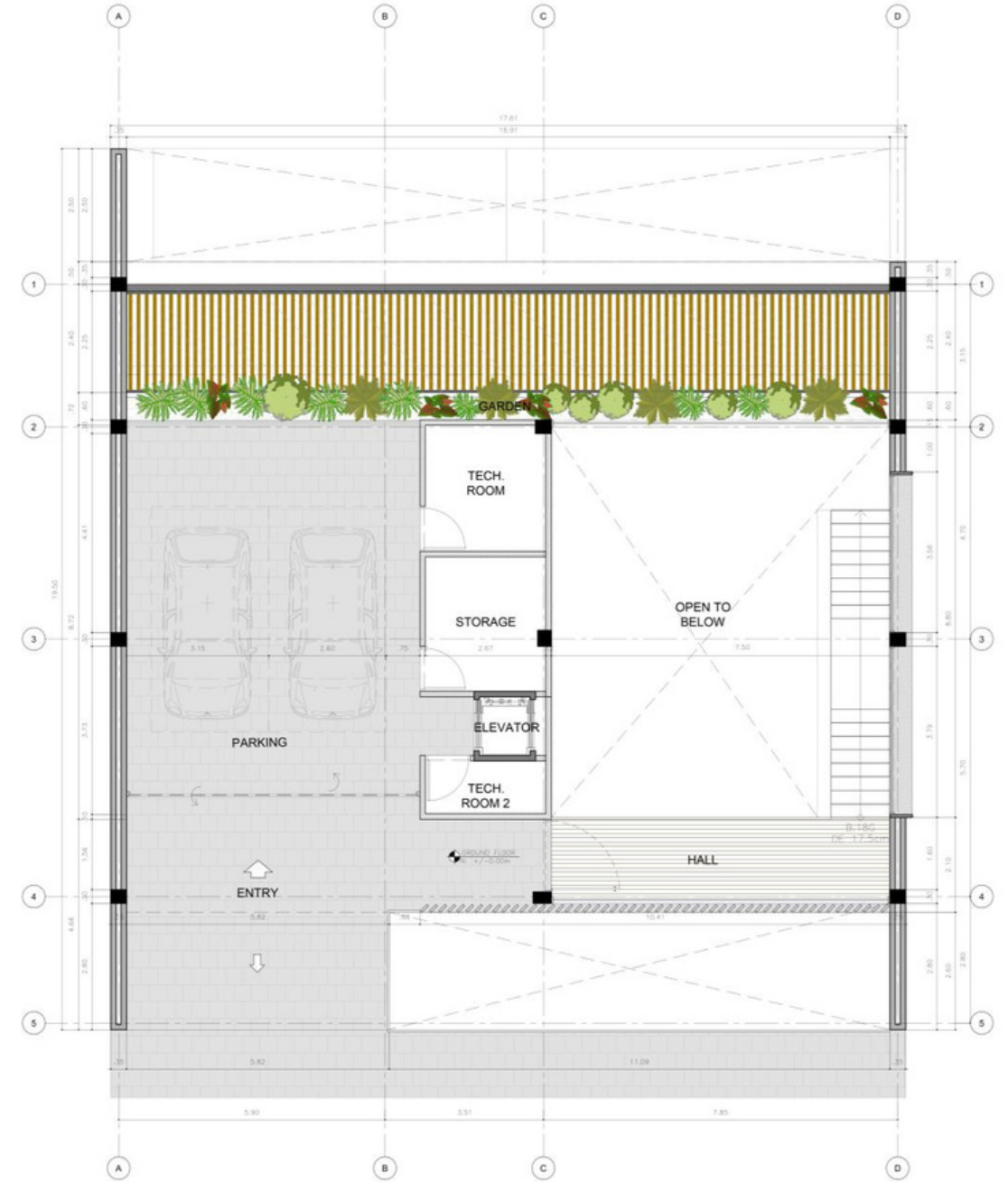
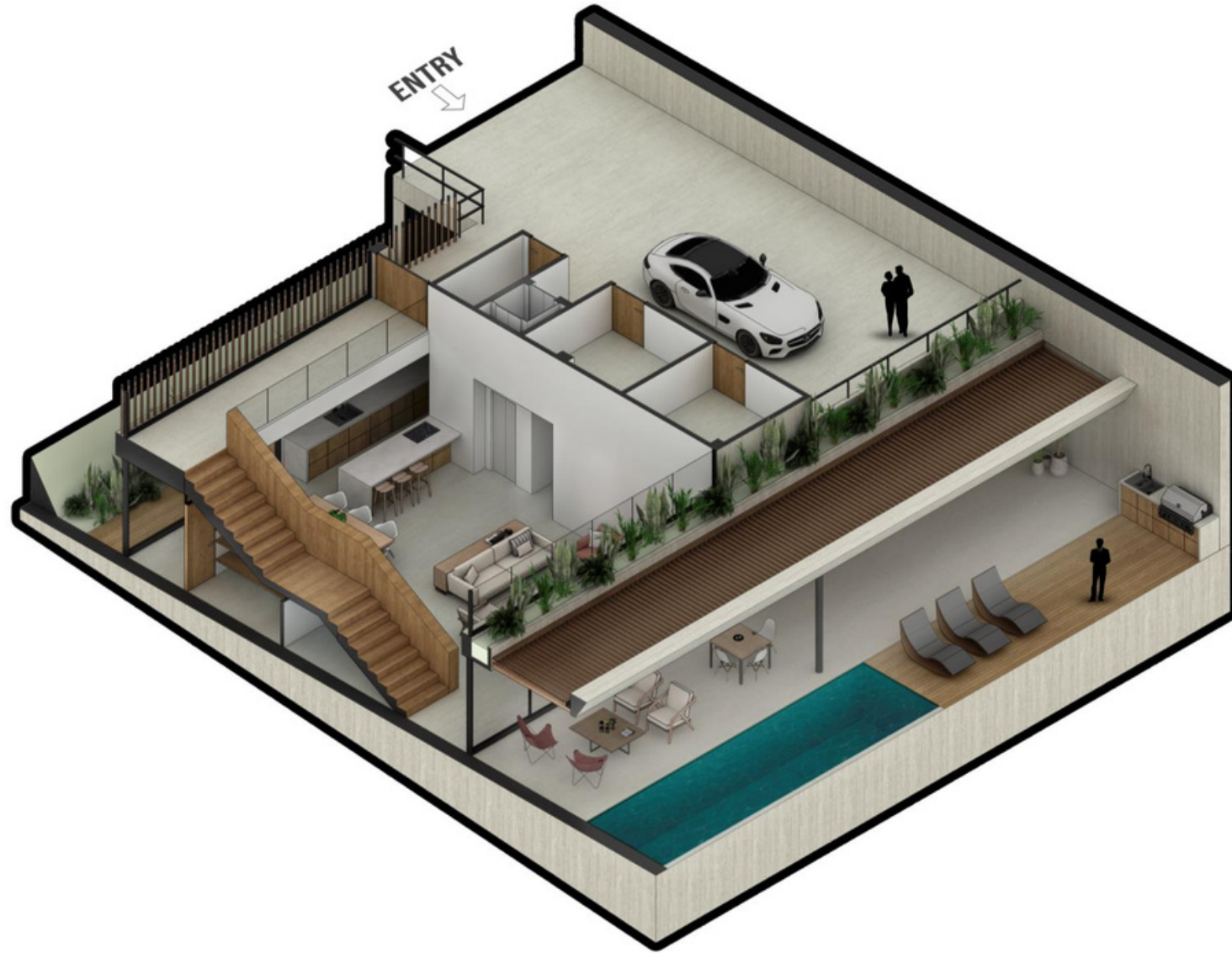
STREA MAIN FLOOR



SPACE	AREA (SqM)	AREA (SqFt)
Parking	89.9	967.67
Storage - Techroom - Elevator	24.17	260.16
Garden	11.5	123.78
Hallway	21.75	234.11
Stairs	8.84	95.15
Kitchen - Dining - Pantry	42.64	458.97
Laundry - Social Bath	9.49	102.15
Living	39.22	422.16
Circulation	13.99	150.58
Terrace - BBQ - Pool	103.56	1114.71
Master Bedroom - Bath and dressing room	35.89	386.31
Bedroom 2 - Bath and dressing room	27.1	291.70
Bedroom 3 - Bath and dressing room	26.85	286.10
Deck - Slope Garden	32.28	347.45
BUILT AREA	487.18	5243.96



STREA UPPER FLOOR



PELIKAN

Overwater Bungalows

Immerse yourself in the tranquil serenity of your private oasis, where panoramic views of the surrounding beauty unfold in every direction. These meticulously designed bungalows offer a seamless blend of modern architecture and lavish comfort, providing an unmatched living experience. Step out onto your expansive deck to bask in the warm sun, host unforgettable gatherings, or simply enjoy the gentle rocking of the waves beneath your feet. With unrivaled access to the water and a host of exclusive amenities, these bungalows offer a haven of relaxation and sophistication for those seeking an extraordinary lifestyle.

6 units | 1 bedroom | Furnished

| 117 sqm | 1259.37 sqft Inquire for price



**PELIKAN
OVERWATER BUNGALOWS**



PELIKAN
OVERWATER BUNGALOWS



PELIKAN
OCEAN-SIDE FACADE



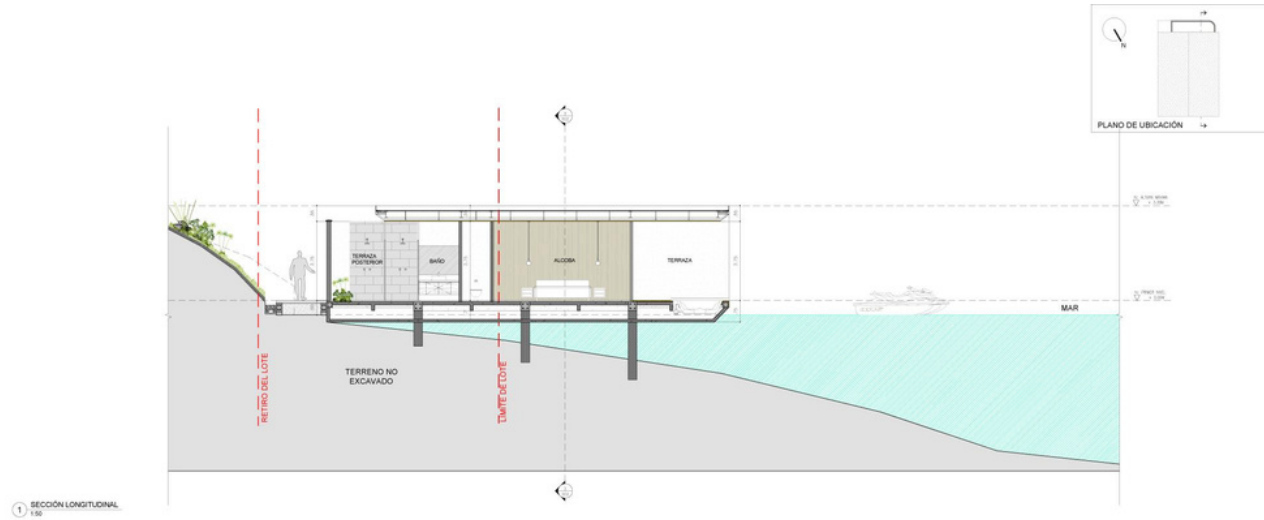
PELIKAN
TERRACE



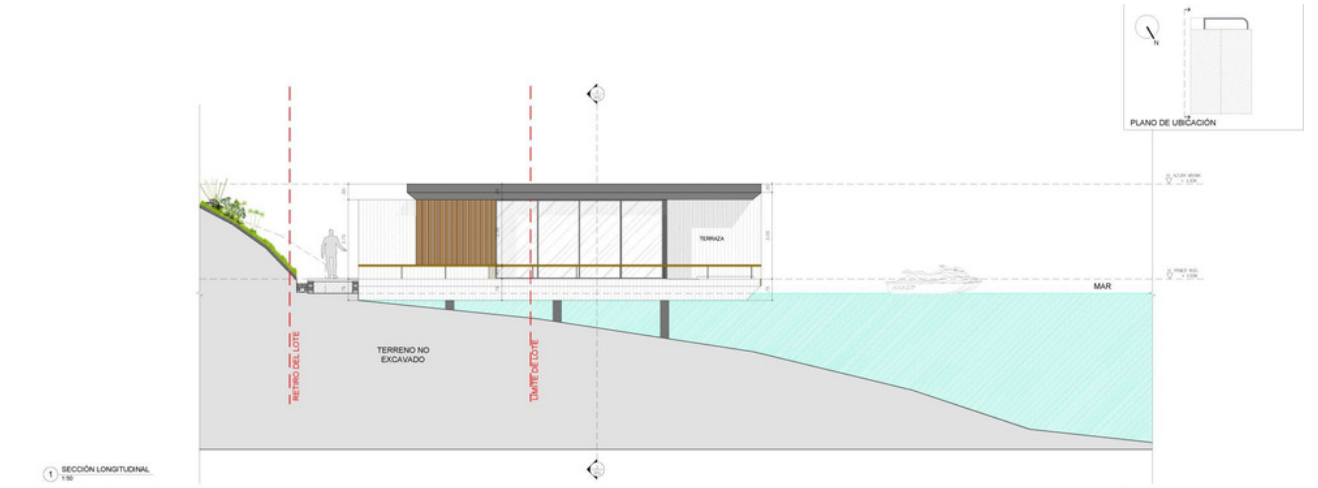
PELIKAN
BEDROOM -LIVING



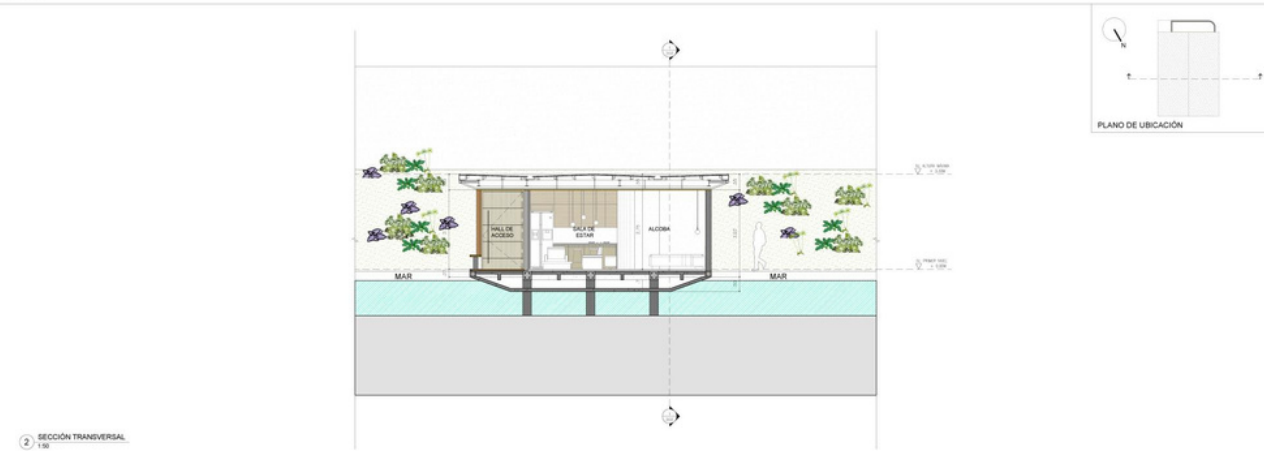
ELEVATIONS



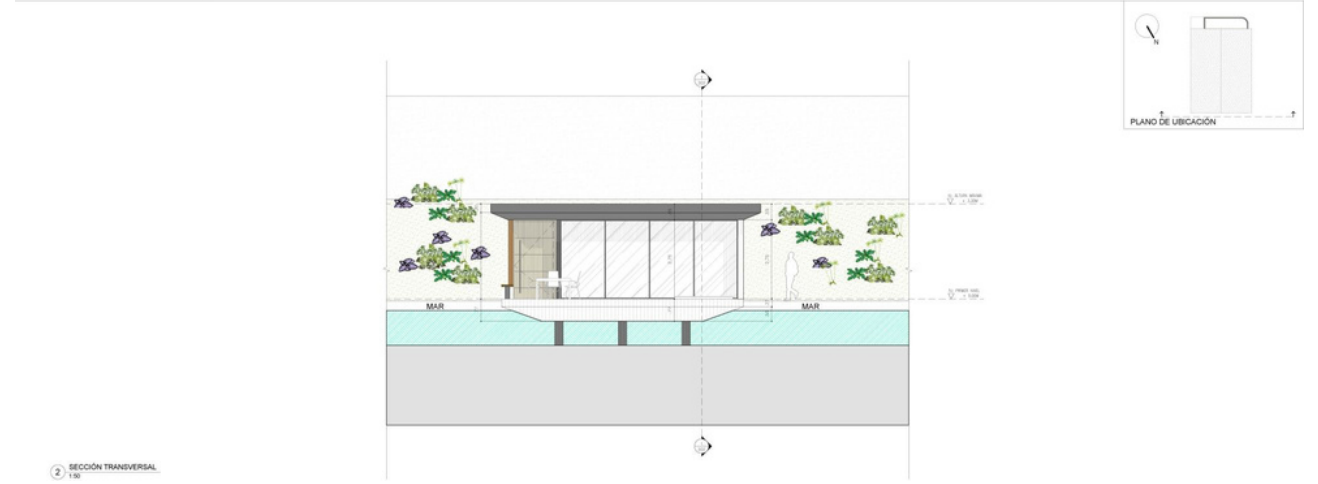
1 SECCIÓN LONGITUDINAL
1/50



1 SECCIÓN LONGITUDINAL
1/50



2 SECCIÓN TRANSVERSAL
1/50

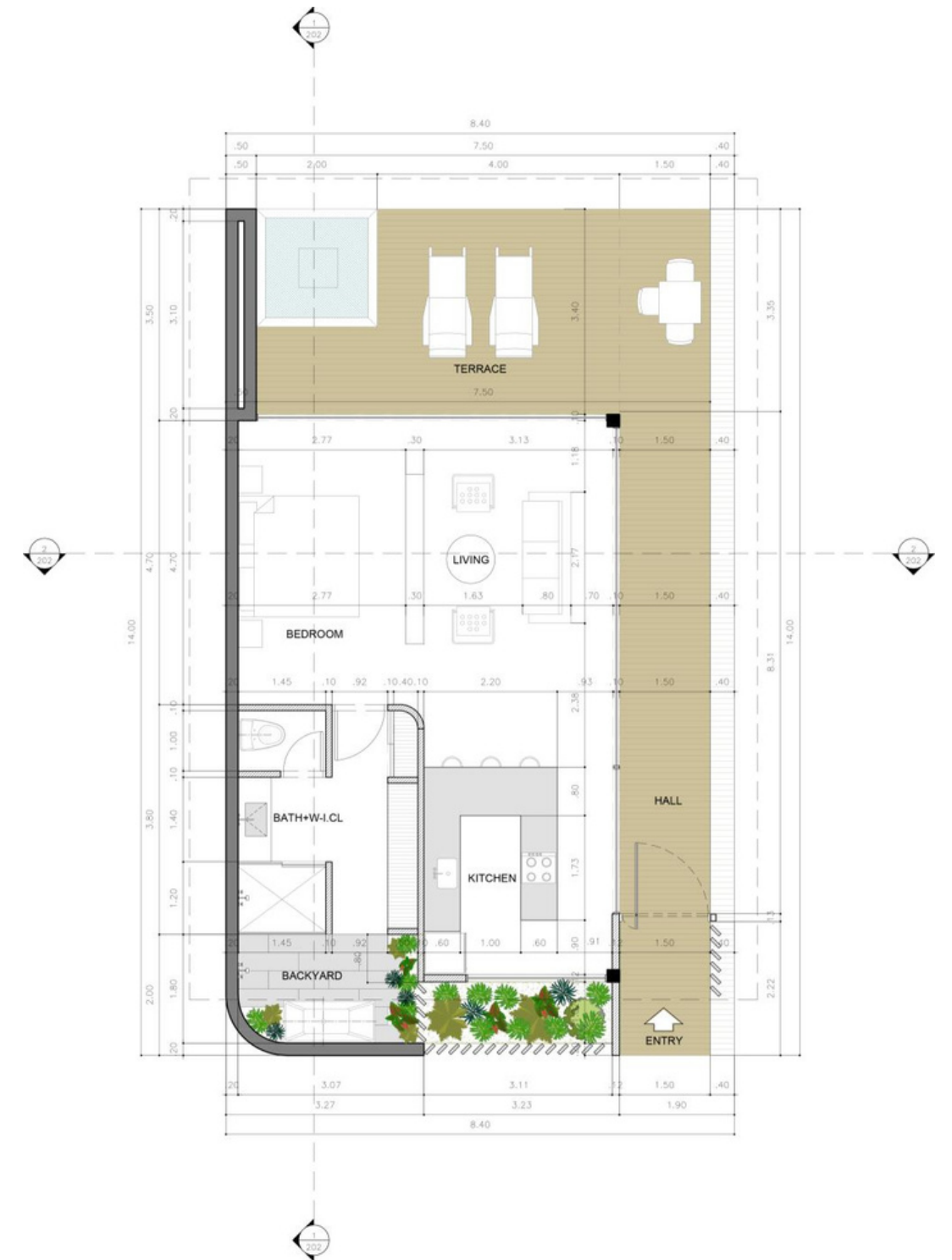


2 SECCIÓN TRANSVERSAL
1/50

PELIKAN OVERWATER BUNGALOW



SPACE	AREA (SqM)	AREA (SqFt)
Hall	20.13	216.67
Terrace	28.56	307.41
Living	15.5	166.84
Master Bedroom - Bath and dressing room	28.12	302.68
Kitchen	14.82	159.52
Backyard	10.25	110.33
BUILT AREA	117.38	1263.46



Pure Luxury

THE STANDARD LUXURY ARCHITECTURAL ELEMENTS & AND FINISHES

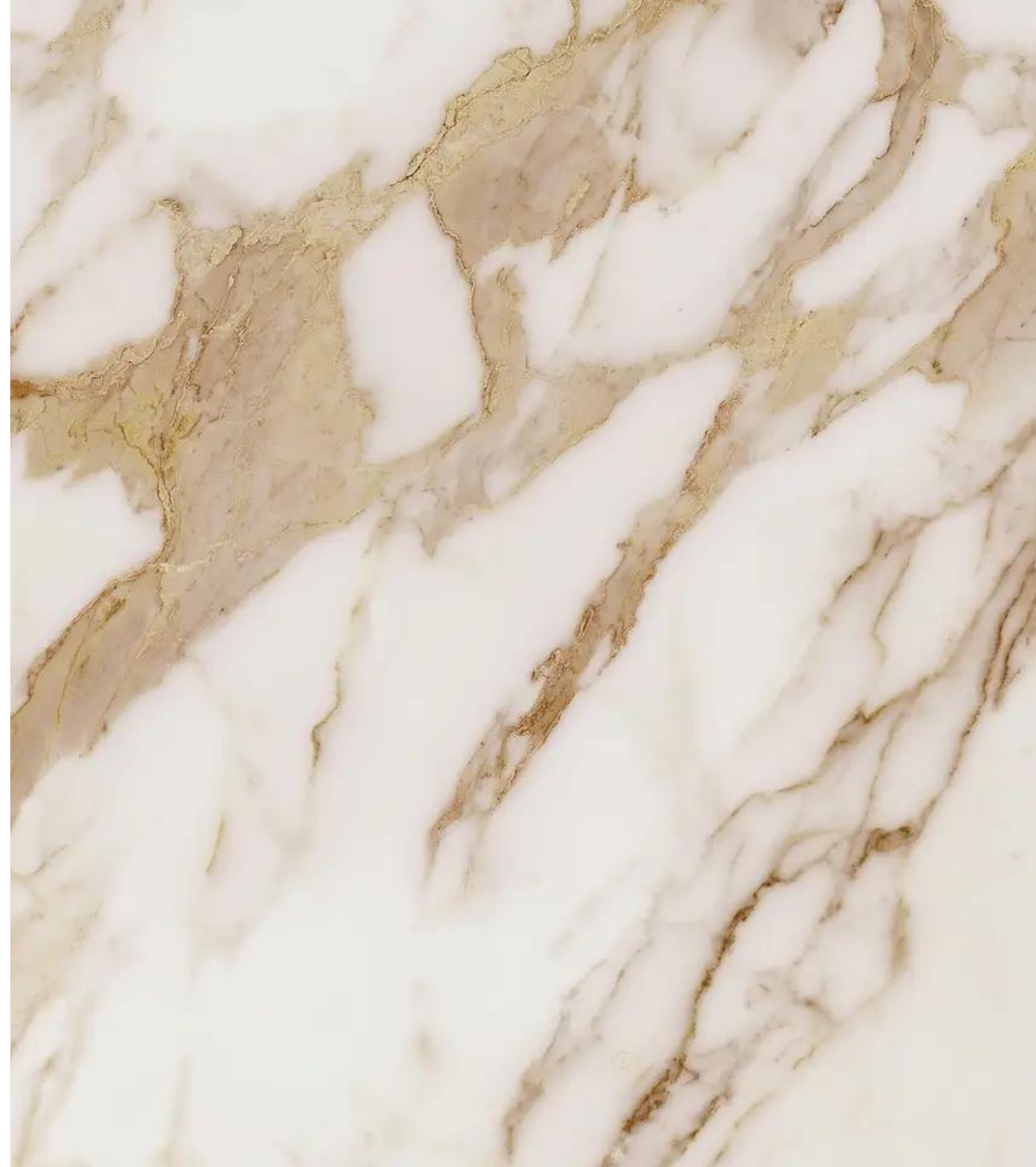
- Private Balcony or Deck
- Contemporary Porcelain Tiles in large format
- Luxury Flooring & Baseboards
- Multi-Leveled smooth ceilings in minimalist zero-edge design
- Designer Security Front Doors with Top-of-the-Line Hinges with added security features including Peephole, Bolted Hinges, Keyless Entry, and Door Guard
- Panoramic Floor-to-Ceiling Windows with Energy Efficient Tinted Double Pane Glass
- Panoramic Floor-to-Ceiling Folding or Sliding Doors (per plan) with Energy Efficient Tinted Double Pane Glass

MODERN ELECTRICAL FEATURES & INSTALLATIONS

- Designer Lighting Plans
- Designer Lighting Fixtures
- Designer Switches and Wall Plates
- Smart LED Lighting
- Ambiance Lighting

HIGH-END KITCHEN & BATH FF&E

- Modern Cabinetry
- Porcelain and Ceramic Countertops
- Designer Fixtures & Accessories
- Luxury Brand Appliances
- Ambiance Lighting





Pure Style

The homes at **LAMAN** have been carefully interior-designed to create welcoming and captivating living spaces whilst paying homage to the surrounding landscape. Our ethos throughout the design process has been to capture and respect Curaçao's natural beauty and is embodied from the spacial architecture, and design all the way through to material selection.

Big volumes, open-plan design, and treated glazing flood the interiors with natural light and allow them to be opened up to the east-facing bays, providing a seamless transition between inside and out.

Wood, stone, and other natural materials have been selected for custom cabinetry, millwork, and flooring throughout the homes in order to achieve organic spaces that feel as close to nature as possible. Lighting, and contract-grade furniture all the way to window treatments have been hand-selected with functionality and aesthetics in mind; long-lasting materials curated to result in textured, timeless, modern yet warm spaces.

Pure Comfort

The **LAMAN** Community will include resort-like amenities in a waterfront setting. The following are examples of the resort-like facilities and amenities you will enjoy:

- Gated Community with Keypad Access
- Private Assigned Parking
- 24-Hour Security
- Wheelchair Accessible

N'AWA OCEAN CLUB

- Lobby/Reception Area with Lounge Areas and Restrooms
- Main Pool and Lounge Areas
- Restaurant & Bar
- Roof Top & LIFT Bar
- Roof Pool
- Gym

KABACUCHI MARINA

- Mooring



MAIN POOL

At the heart of it, all is **N'AWA OCEAN CLUB**, LAMAN's haute 'Beach Club', bar, eatery, and lounge for the chic, glam, and urbane. The sleek and vibrant ambiance and décor are customized especially for our venue, where artistic lighting, great food, and good vibes, create an energetic environment for cocktails, food, fun, sun, and ease. **N'AWA** is a full-service Beach Club with reception and concierge services, a restaurant serving breakfast, lunch, snacks, and dinner, and full-scale beach and bar services. From exotic cocktails to fine dining a-la-carte, we are committed to providing all of our residents and visitors with the perfect ambiance for mixing and mingling over signature cocktails and delicious food.



A rooftop terrace with a bar, lounge chairs, and tables overlooking a bay and city. The terrace features a wooden pergola structure, a bar with stools, lounge chairs, and tables with wicker chairs. The view includes a bay with boats, a city, and a large mountain in the background under a blue sky with clouds.

A View to Sea

The rooftop will be an open-air mirador that will take full advantage of the surrounding views and will feature the signature Bar **LIFT** 'Lounge. Bar. View.' Visitors will enjoy panoramic 360 degrees of breathtaking views of the Bays and surrounding areas. The name '**LIFT**' epitomizes an overall up**LIFT**ing and elating feeling and experience. It also represents the upward movement, levitation, ascension, altitude, and the high views associated with the elevated location. It further represents a state of well-being, freedom, and looseness associated with the **LIFT**ing of moods and spirits.



LAMAN Management

The developers will enter into a strategic agreement with a branded high-end property and vacation rental operator. Together we are committed to providing the highest level of service to all residents and guests.

Through tech-enabled solutions, we will offer best-in-class on-site management to maximize returns for our owners while ensuring bespoke and memorable experiences for guests and residents alike.

Services Elevated

CORE SERVICES

- Residential Concierge
- 24-hour Security
- Work-space and Business Services

À LA CARTE SERVICES

(Optional)

- Contract Housekeeping
- Professional Property Management
- Professional Vacation Rental Program & Management
- Residential Maintenance Programs





Be pampered Be wowed

A blissful experience of unparalleled carefree 'luxury barefoot' resort living is what awaits **LAMAN** residents and guests. It's all about exceptional personal service. Our highly trained staff consists of a team of friendly, outgoing, skilled, motivated, and service-minded individuals who are here to make each guest's stay pleasant, comfortable, carefree, special, and unforgettable.

- Concierge Services
- Activity Desk
- Business and Courier Services
- Medical Service
- Catering and Special Events Planning & Services
- Babysitting Service
- Laundry and Dry-cleaning Service
- Beach service: including ice chest with F&B, snorkel equipment, and beach chairs
- Watersports service. Including boat charters

Environment Matters

At **LAMAN** you'll find beneficial environmental features not found in many other residential complexes on the island. Our commitment to the environment and its conservation is policy.

- Energy-efficient /High-Efficiency Home Appliances
- Energy-Efficient LED Illumination in all Common Areas
- Water use Reduction with Low Flow Fixtures and Dual Flush Toilets
- On-site Renewable Energy Source through Solar Panels
- Water Efficient Landscaping with Irrigation Control Measures and low maintenance Native Plants and Foliage
- Optimized Energy Performance with Laminated Windows and Doors and greater insulation
- Maximized daylight and views
- Reduced light pollution
- Improved indoor air quality
- "Green" education for staff and guests as well as green-friendly maintenance practices
- No plastic on beach policy

